



IsoFlex Technologies Pty Ltd.

Unit 33, 75 Waterway Drive, Gold Coast Marine Precinct, Coomera, Queensland, Australia. 4209
 Ph: 1300 366 393 Ph: 07 555 60 924 F: 07 555 60 984 Int prefix: 617
 Email: info@isoflex.com.au
 Home Page: www.isoflex.com.au

IsoFlex Mount Data Sheet

Loading Type:

Axial - Vertical Down (A-direction)

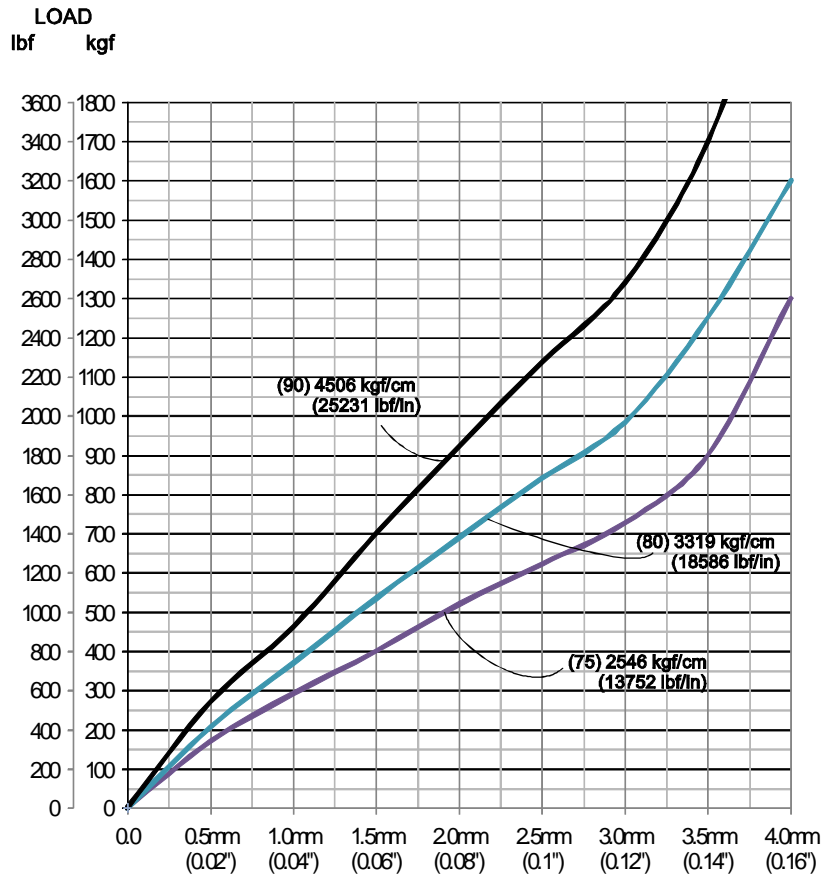
Mount Model: M130XHD-24 B

'M130' = model number
 'XHD' = Extra Heavy Duty
 '24' = thread size
 'B' = Bolt down type

| Resilient Element Colour | Shore Durometer Hardness A-scale SDH-A |
|--------------------------|--|
| Yellow | 50 |
| Red | 60 |
| Black | 70 |
| Royal Blue | 75 |
| Green | 80 |
| Grey | 90 |

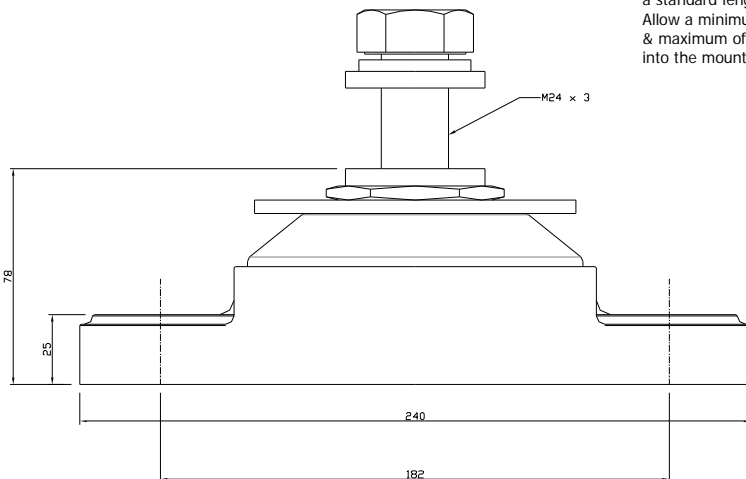
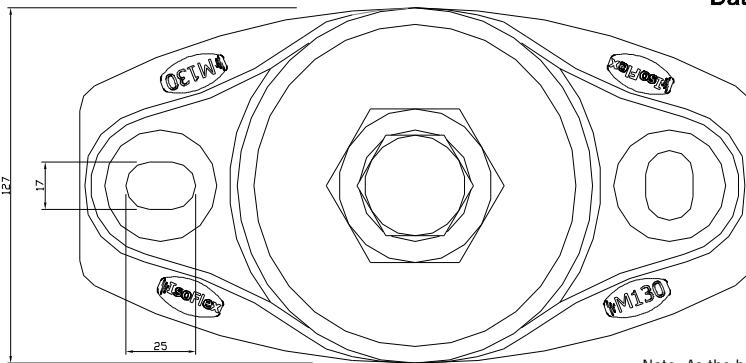
Base: Black - 75 SDH-D

All metal components zinc plated to ASTM B633 SC3



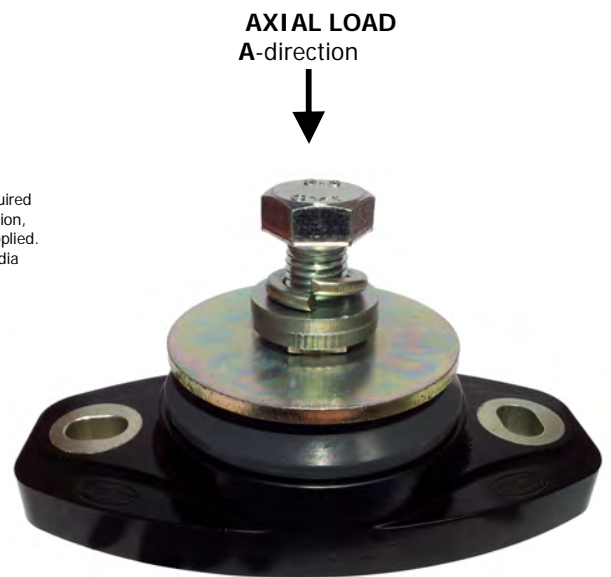
Graph 1: Static Axial Vertical Load [kg] (A-direction) versus Deflection [mm] (ins)
 Data shown: (x) = SDH-A Hardness
 kgf/cm (lbf/in) = Spring Rate for working load range.

Note: Stated Spring Rate average @ 3mm



Mount Model: M130XHD-24 B General Arrangement

Dimensions in millimetres (mm) - unless stated otherwise



Drawing Number: DSA-M130XHD-24B Rev2
 Drawn: WF Date: 23 April 2012

Copyright © 2012 **IsoFlex Technologies Pty Ltd.**

Specifications are subject to change without notice.



IsoFlex Technologies Pty Ltd.

Unit 33, 75 Waterway Drive, Gold Coast Marine Precinct, Coomera, Queensland, Australia. 4209
 Ph: 1300 366 393 Ph: 07 555 60 924 F: 07 555 60 984 Int prefix: 617
 Email: info@isoflex.com.au
 Home Page: www.isoflex.com.au

IsoFlex Mount Data Sheet

Loading Type:

Longitudinal Thrust (T-direction)

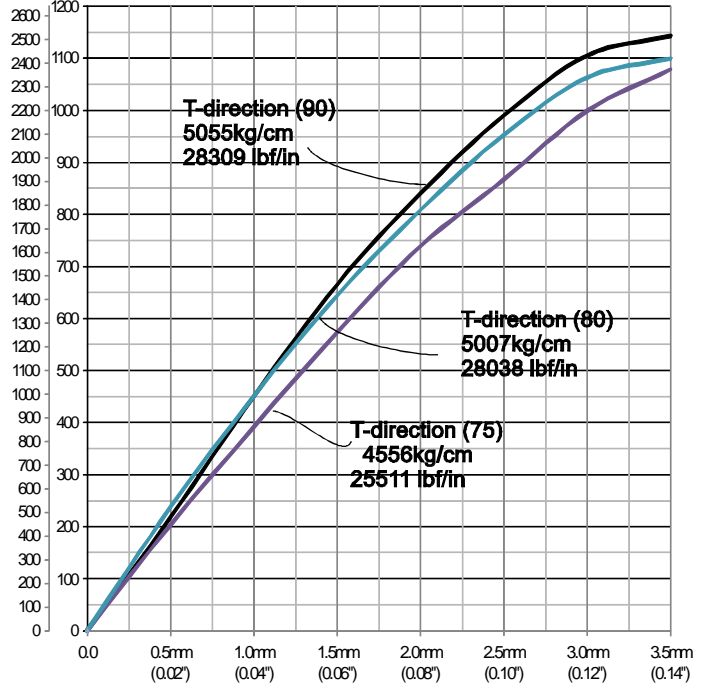
Mount Model: M130XHD-24B

'M130' = model number
 'XHD' = Extra Heavy Duty
 '24' = thread size
 'B' = bolt type

| Resilient Element Colour | Shore Durometer Hardness A-scale SDH-A |
|--------------------------|--|
| Yellow | 50 |
| Red | 60 |
| Black | 70 |
| Royal Blue | 75 |
| Green | 80 |
| Grey | 90 |

Base: Black - 75 SDH-D

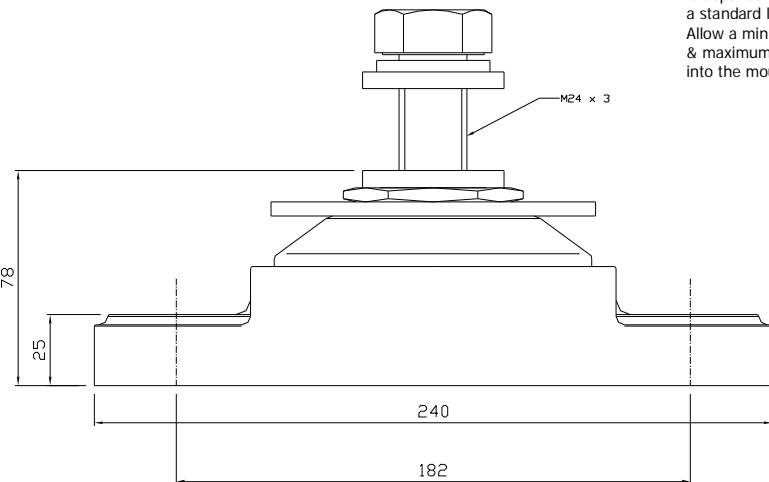
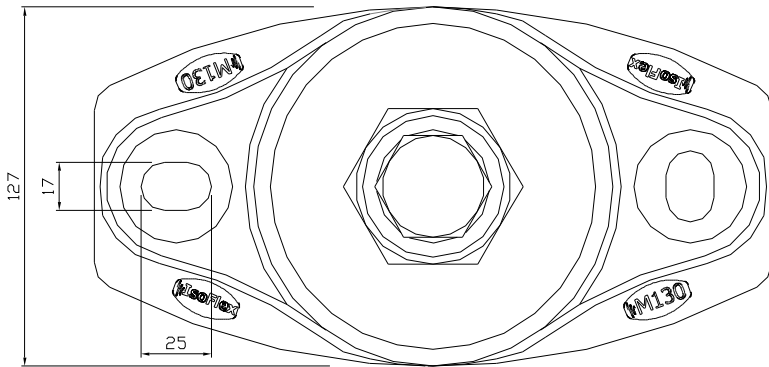
LOAD
Lbs kg



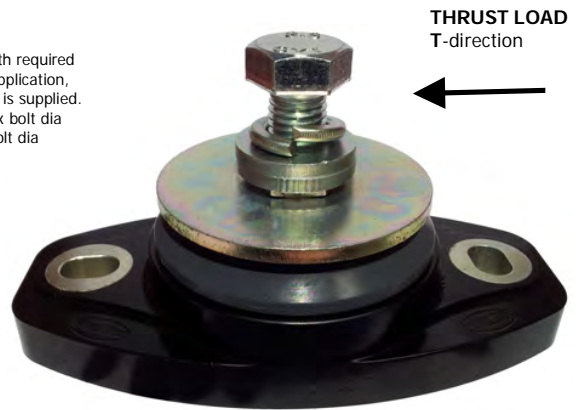
All metal components zinc plated to ASTM B633 SC3

Graph:
Static Longitudinal Thrust Load (T-direction) versus Deflection [mm] (ins)

Note: Stated Spring Rate average @ 2mm



Note: As the bolt length required is dependent on the application, a standard length bolt is supplied. Allow a minimum of 1x bolt dia & maximum of 1.5x bolt dia into the mount.



Drawing Number: DST-M130XHD-24B [R1]
 Drawn: WF Date: 22 June 2012

Copyright © 2012 **IsoFlex Technologies Pty Ltd.**

Specifications are subject to change without notice.

Dimensions in millimetres (mm.) - unless stated otherwise



IsoFlex Mount Data Sheet

Loadings:

Lateral Thrust (L-direction)

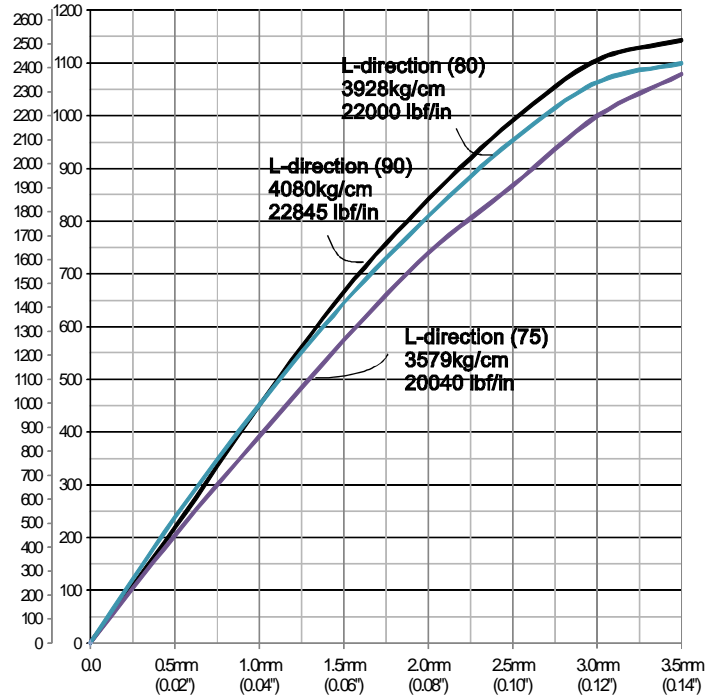
Mount Model: M130XHD-24B

'M130' = model number
 'XHD' = Extra Heavy Duty
 '24' = thread size
 'B' = bolt type

| Resilient Element Colour | Shore Durometer Hardness A-scale SDH-A |
|-------------------------------|--|
| Yellow | 50 |
| Red | 60 |
| Black | 70 |
| Royal Blue | 75 |
| Green | 80 |
| Grey | 90 |
| Base: Black - 75 SDH-D | |

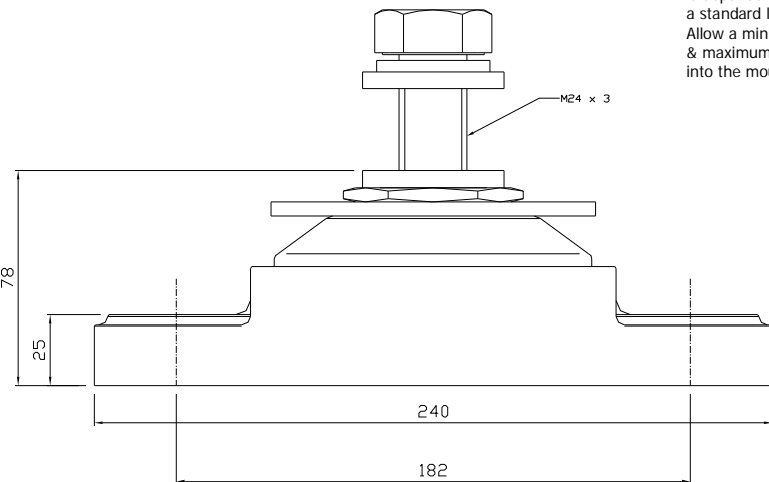
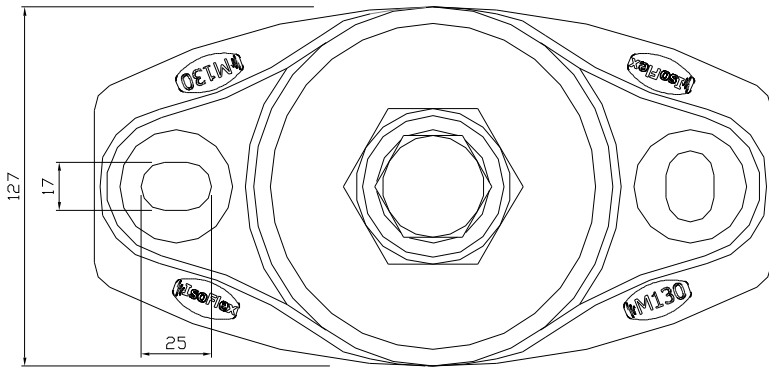
All metal components zinc plated to ASTM B633 SC3

LOAD
Lbs kg

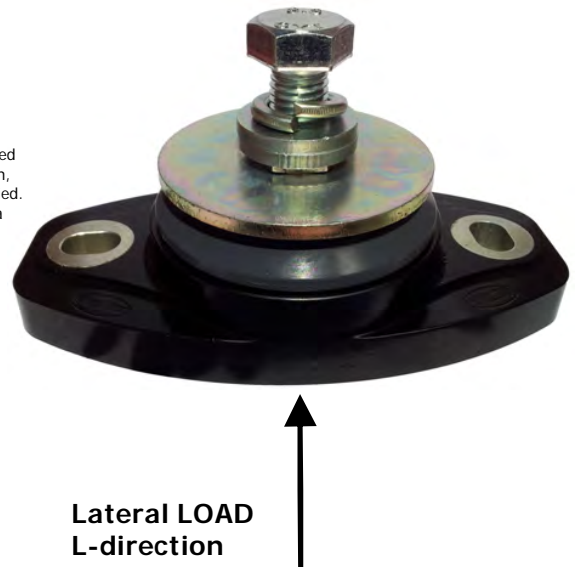


Graph:
Static Lateral Load[kg] (L-direction) versus Deflection[mm] (ins)

Note: Stated Spring Rate average @ 2mm



Note: As the bolt length required is dependent on the application, a standard length bolt is supplied. Allow a minimum of 1x bolt dia & maximum of 1.5x bolt dia into the mount.



Lateral LOAD
L-direction

Drawing Number: DSL-M130XHD-24B [R1]
 Drawn: WF Date: 22 June 2012