

ISOFLEX MOUNT DATA SHEET - CM6

CM6 - YEL

Resilient Core Type	
YEL	Yellow
RED	Red
BLK	Black
Other duro available on request	

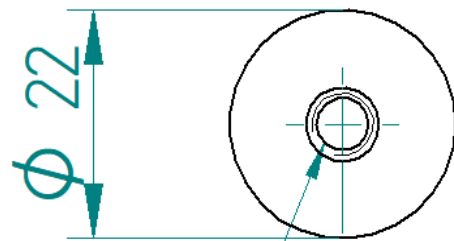


SPECIFICATION:

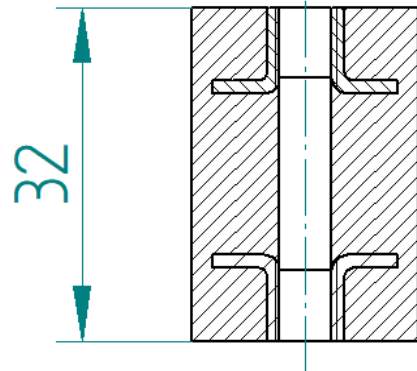
Dimensions	Metric	Imperial
	(mm)	(in)
Diameter	22	0.87
Height	32	1.26
Bolt diameter	M6	M6

Weight	Metric	Imperial
	(kg)	(lb)
CM6	0.02	0.04

Recommended working load per mount	Metric	Imperial
	(kg)	(lb)
CM6-YEL	1-15	2-33
CM6-RED	1-40	2-88
CM6-BLK	20-50	44-110

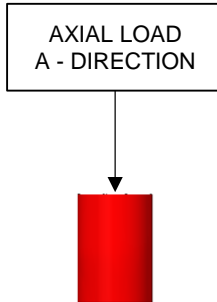


M6 Threaded Insert

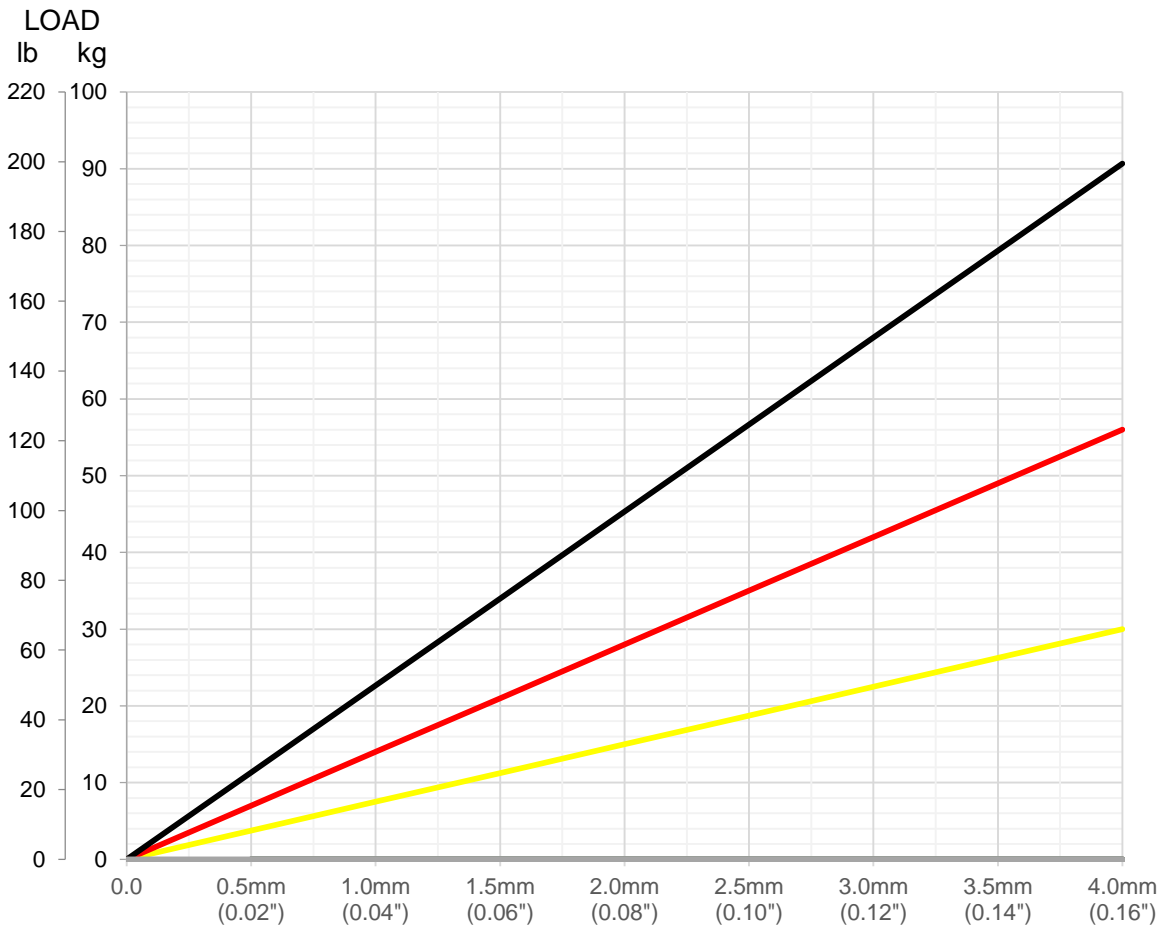


ISO FLEX MOUNT DATA SHEET - CM6

Loading Type: Axial - Vertical Down (A-direction)



Resilient Core Colour	Spring Rate at 2mm	
	(kg/cm)	(lb/in)
Yellow	75	420
Red	140	785
Black	225	1260



Graph: Static Axial Vertical Load [kg] (lb) versus Deflection [mm] (in)