

ISOFLEX MOUNT DATA SHEET - CM8

CM8 - YEL

Resilient Core Type	
YEL	Yellow
RED	Red
BLK	Black
Other duro available on request	

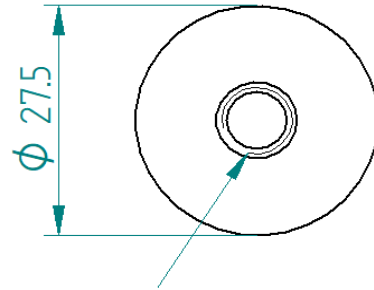


SPECIFICATION:

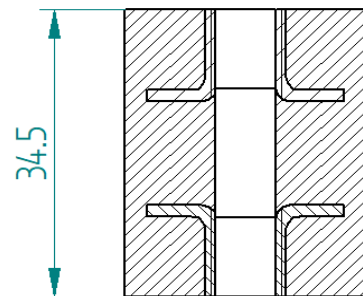
Dimensions	Metric (mm)	Imperial (in)
Diameter	27.5	1.08
Height	34.5	1.36
Bolt Diameter	M8	M8

Weight	Metric (kg)	Imperial (lb)
CM8	0.03	0.07

Recommended working load per mount	Metric (kg)	Imperial (lb)
CM8-YEL	1-30	2-66
CM8-RED	15-50	33-110
CM8-BLK	40-80	88-176

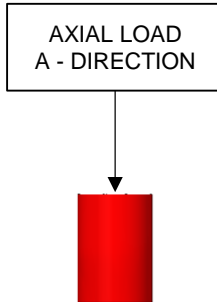


M8 Threaded Insert

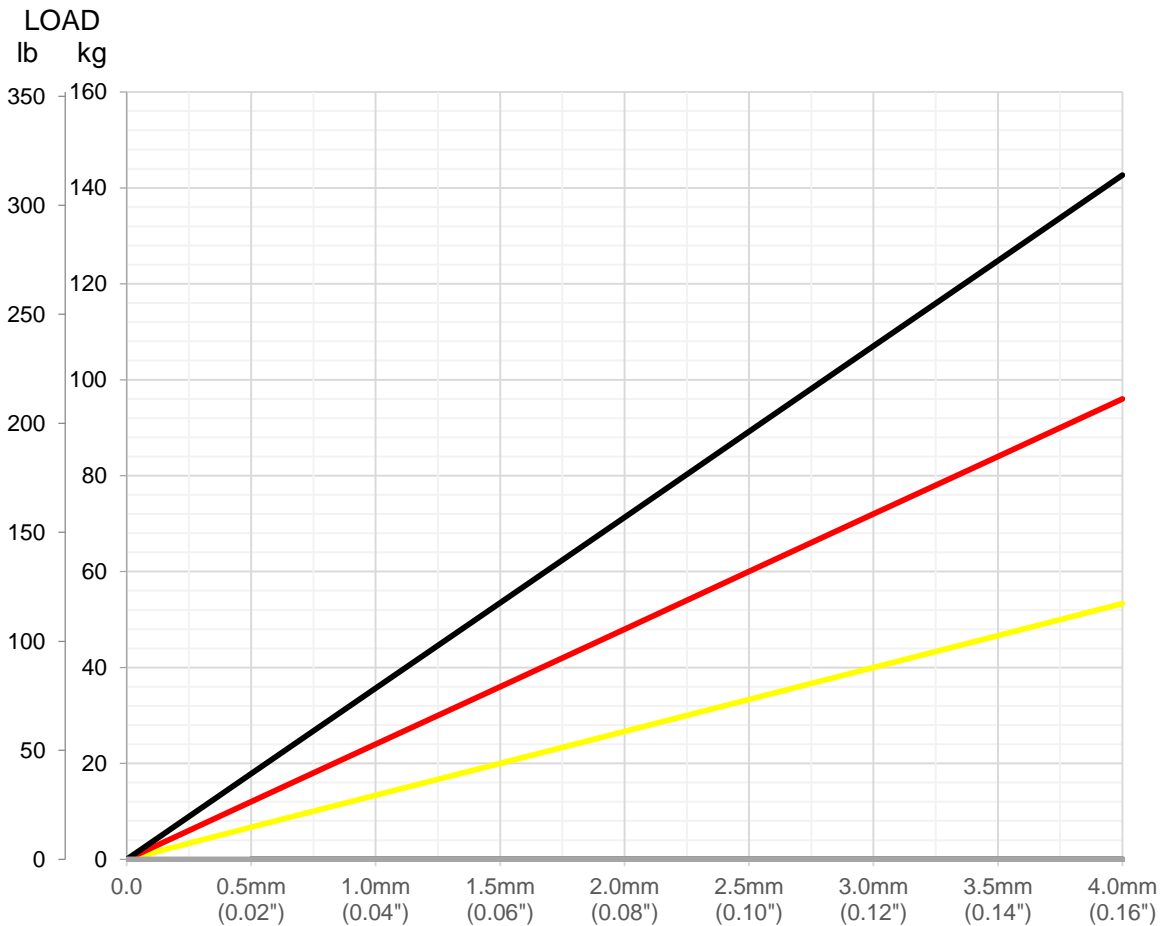


ISOFLEX MOUNT DATA SHEET - CM8

Loading Type: Axial - Vertical Down (A-direction)



Resilient Core Colour	Spring Rate at 2mm	
	(kg/cm)	(lb/in)
Yellow	135	755
Red	240	1345
Black	355	1990



Graph: Static Axial Vertical Load [kg] (lb) versus Deflection [mm] (in)