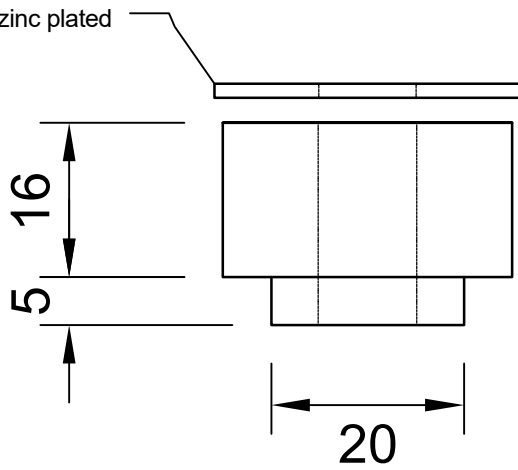
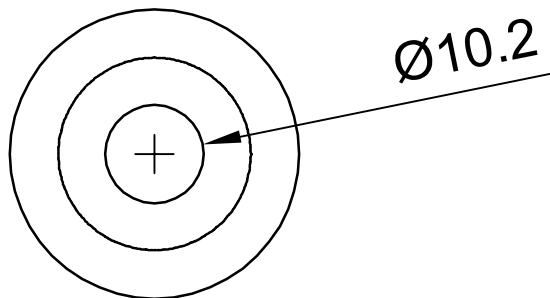
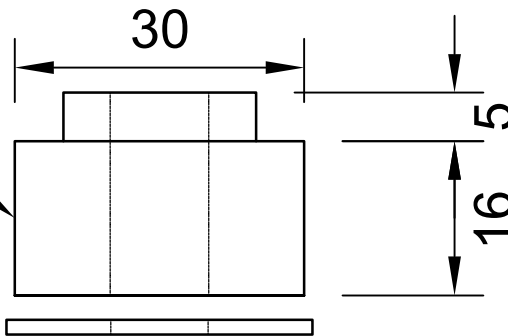


3/8" x 1 1/4" SAE Flat Washer zinc plated



Polymer Top & Bottom cores.
Duro as required

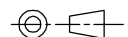


Part No: MT30201010

***Note 1: No crush tube included.**
Polymer preload 0.5mm per core
set by installation arrangement.

**** Note 2: Hardware not supplied.**

MT30201010	Working Load 50A Duro (kg)	Working Load 60A Duro (kg)
	5-50	50-100



Drawing Notes:

Copyright © 2019 Isoflex Technologies Pty Ltd

Drawing: NOT TO SCALE
 Unless stated otherwise - dimensions are in millimeters (mm)
 E&OE
 Specifications subject to change without notice



Drawing Number: MT30201010 GA Rev1

Drawn: W. Farmer

Date: 04 April 2019