

M10 Hex Bolt - AS1110 Cl 8.8 Zinc Plated

Bolt Shear Capacity 'Thread' [BSC] = 26kN
 Bolt Pattern Shear Capacity [BPSC] = 5,200 Nm
 Bolt Pattern Design Torque [BPDT] = 1,300 Nm

$BDPT = \frac{1}{4} \times BPSC$

IFC-4400-95 Coupling Ratings:
 Pleasure craft = 850 Nm
 Intermediate = 750 Nm
 Continuous = 500 Nm

IFC-4400-95 Coupling Weight = 0.9 kg

Item 1: High Tensile Engineering Polymer Disc

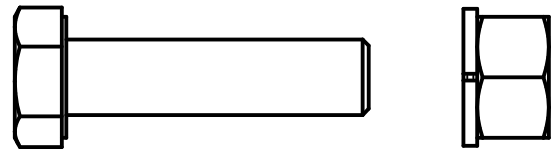
Propeller flange side

Gearbox output flange side

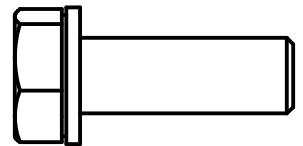
Item 2

Item 3

SECTION A-A

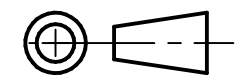


Item 2: M10 x 40 Hex Bolt, Nut and Spring Washer



Item 3: M10 x 30 Hex Bolt and Spring Washer

IFC-4400-95



Copyright © 2020 Isoflex Technologies Pty Ltd				
TITLE		IFC4400-95 General Arrangement		
	NAME	DATE		
DRAWN	Matthew McCart	04/Nov/20		
CHECKED	-	-		
APPR	-	-		
UNLESS OTHERWISE SPECIFIED DIMENSIONS ARE IN MILLIMETERS			SIZE A3	DWG NO IFC4400-95
SPECIFICATIONS SUBJECT TO CHANGE WITHOUT NOTICE			REV B1	FILE NAME: IFC4400-95 General Arrangement_B1.dft
SCALE: 1:1		WEIGHT:		SHEET 1 OF 1